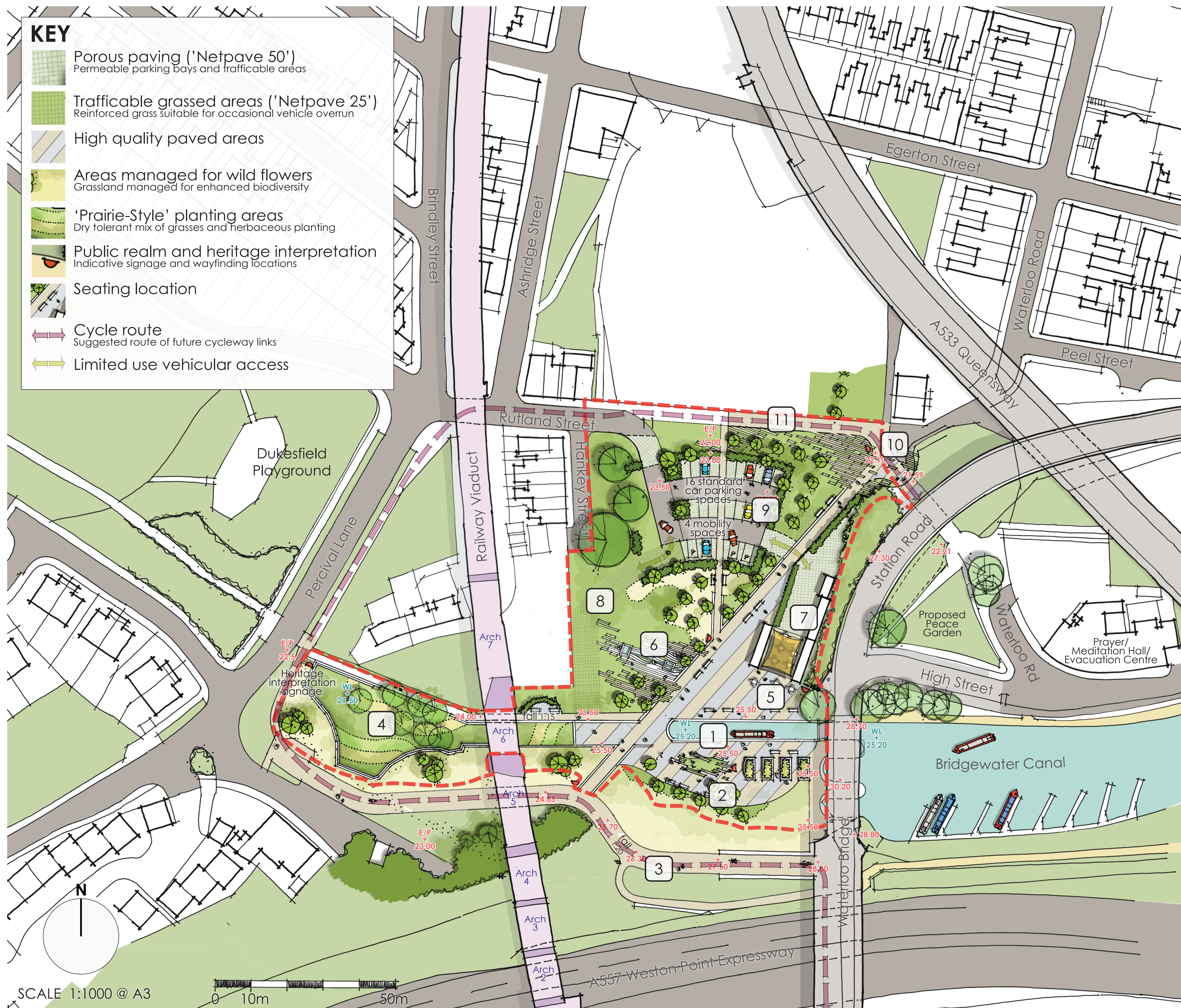


DRAFT

Key Features

- 1 Trip boat mooring/boarding
- 2 Event space (south) and community growing area
Flexible open event space to south of canal, flanked by orchard planting and grassland managed as wild flower plus raised beds for community foraging and growing; grass mounds and seating
- 3 Elevated cycle way
Link to newly completed cycle path
- 4 Green 'amphitheatre' space
Seating edge traces outline of future winding hole and provides opportunities for heritage interpretation, filled with a mix of amenity grass, 'prairie style' planting (a mix of grasses and herbaceous plants); outer area managed as wildflower meadow; existing trees retained
- 5 Event space (north) and cafe 'spill-out' space
Flexible open event space to north of canal providing opportunity for cafe 'spill-out' area; seating with sail structure for shade/shelter
- 6 Formal Water Play
'Archimedes Screw' play feature fed by water through rill leading from the canal
- 7 Compound with containers
Secure compound area fronted by shipping containers - potential cafe, office/meeting room, and toilet/utility. Active frontage to public open space. Indicative layout suggested
- 8 Potential/future access route
Reinforced grass
- 9 Car park with SuDS permeable paving
Threshold of porous paving; Bitmac access road into porous paving parking spaces - 16 standard spaces plus 4 mobility spaces incorporating electric vehicle charging points; fruiting tree and shrubs selected for community foraging; access route to secured compound
- 10 Gateway/Threshold
Confluence point providing welcome into park plus signage and wayfinding
- 11 Future cycle link
(proposed as part of future development site to north of Rutland Street)



Unlock Runcorn

Site Layout Plan